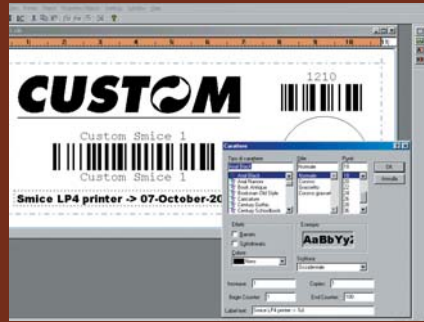


CUSTOM label printers are equipped with EasyLabel software to manage labels for PC (Windows 98/2k/XP)



Portable



Desktop 80/112mm



S'print-LP1

S'print-LP1 is the smallest "wireless" thermal printer for labels, width 58mm and height 1" inch minimum. It is powered using rechargeable batteries with RS232 serial interface + bidirectional infrared / IRDA (IRDA protocol supported: IrLPT, IRCOMM 3 wire RAW) or with Bluetooth™ wireless technology. Easy paper automatic loading through the "sixload" patented system.

Updating customer logo and following barcodes printing: Interleaved 2-C, CODE 39, CODABAR, EAN8, EAN 13. S'print-LP1 finds ideal application in automatic identification and safety markets, in automotive and combined with portable terminals without printer.

Lola-LP2

Desktop thermal label printer with peel-off system and internal power supply. Label size: width 60mm and height 1" inch minimum.

USB+RS232 serial interfaces. Label end, label detection and head temperature sensors are available. Most common barcodes printing: UPC-A, UPC-E, EAN8, EAN13, CODE39, ITF, CODABAR, CODE93, CODE128, CODE32 and UCC/EAN128. Lola-LP2 is suitable for weighing system applications, combined with measurement and test instrumentation.

Smice-LP4

Thermal label printer with internal power supply suitable both for industrial environment and for point of sale, where space requirements are priority.

Label size: width 80 or 112mm, with changeable height, 1" inch minimum. Printing speed up to 110mm/sec, RS232 serial standard interface. RS485/RS422 serial and Centronics parallel interfaces, are optional.

Label end, cover open and head temperature sensors are available. Most common barcodes printing: UPC-A, UPC-E, EAN8, EAN13, CODE39, ITF, CODABAR, CODE93, CODE128, CODE32 and UCC/EAN128.

Other products

Moreover, CUSTOM provides with a complete range of barcode scanner with CCD and laser technology, with contact and Long Range up to 10" inches reading distance.

PS2 keyboard (standard), RS232, Wand and USB interfaces are available.

Thanks to these readers Plug and Play system, the connection cables can be exchanged at any time.

	S'print LP1	Lola LP2	Smice LP4
Printing method	Thermal line printing		
Resolution	203 dpi (8 dots/mm)		
Printing speed (mm/sec)	50 (it depends by the battery status, the printing typology and the environment temperature)	High Quality 60, Normal 120, High Speed 140	High Quality 70, Normal 85, High Speed 110
Character set	ASCII standard, International	PC437, PC865, PC863, PC860, PC858, PC850	
Type styles	Normal, double height/width, negative, underlined, expanded	Normal, 1x to 8x height and width, reverse, underlined, italic, bold	
Printing Direction	Straight, reverse	Straight, 90, 180, 270	
Barcodes	Interleaved 2-C, CODE 39, CODABAR, EAN8, EAN 13	UPC-A, UPC-E, EAN8, EAN13, CODE39, ITF, CODABAR, CODE93, CODE128, CODE32 e UCC/EAN128.	
Print area	48mm	56mm	104/80mm
Paper thickness	60µm		65-95µm
Roll dimension	57,5mm ± 1mm, max Ø 50mm	60mm ± 0,5mm, max Ø 90mm	111,5mm ± 0,5mm, max Ø 80mm
Emulation	CUSTOM	CUSTOM / POS	
Interface	Serial 9 pin+IRDA / Serial 9pin + Bluetooth	USB + Serial 9 pin	Serial 25 pin / CX STD
Data buffer	128Byte	16KB	8KB
Flash memory	32KB	256KB	
Graphic memory	1 logo of 384x85 dots	1 logo of 1170x448 dots	1 logo of 832 x 630 dots
Drivers	Win 2K/XP		Win 2K/XP; Linux
Power consumption	925mA*	1.5A*	0.8A*
Power supply	Battery charger: 12-36 Vdc/0.6A Batteries: 5 stilosize AA (NI-MH/NI-CD/ALKALINE) Autonomy:140m of paper (standard Custom receipt and 1850mAh batteries)	100 ± 240 Vac +/-10%	
MTBF	260.000 hours**	220.000 hours**	300.000 hours**
Safety	EN60950 2001		
Marks	CE, TUV, E3, e3, RoHS compliant	CE, RoHS compliant	CE, cUL, TUV, RoHS compliant
Dimensions (WxDxH)	146x88x65mm	160x160x160mm	242x186x132(h)mm
Weight	0.37 Kg	1.1 Kg	1.8 Kg

*50% printing rate
**electronic board



Automotive Applications Approval



- Portable
- Desktop
- From 2" to 4" Label Width
- EasyLabel SW
- Peel-off System

Lola/S'print/Smice

